

TRU-BLU

K9000 

COIN OPERATED DOG WASH



Cover page pet: **Cooper** is nine years-young and loves everything in life - especially the beach! Here he is in his best super hero pose. Just missing the cape! Barb Kirby (Warrnambool)

WE ARE K9000®

Tru Blu Dog Wash is the creator of the world's most inspirational DIY dog wash!

Based in Warrnambool, at the end of the Great Ocean Road, we manufacture highest quality, fully automated dog washes for discerning clients everywhere.

With more than 1200 units in operation around the globe, Tru Blu is a genuine market leader.

Our first machine was created almost 12 years ago and still operates flawlessly to this day, creating hassle-free profits for its owner and turning out many happily wagging tails!

Our journey thus far has taken us around the world as we have carefully built a network of distributors in many countries.

We take genuine satisfaction in knowing we represent 'tru' value to our K9000® owners and customers.

Our team has a wealth of knowledge. As the people who have designed, built and operate K9000® dog washes, we personally stand by our product.

We invite you to explore the unique opportunity the K9000® presents to you.

TRU-BLU
K9000®

Jessie the Kelpie x German Shepherd began life in an animal welfare shelter. She's now five-years-old happily living on a Queensland farm. But despite her Kelpie pedigree, clever and playful Jessie is a little afraid of cows. At least she looks the part!

A WISE CHOICE

The K9000® is all about exceptional quality.

From the stainless steel finish to the carefully selected and individually tested internal components, this robust product is durable enough to withstand many years of continual use.

Practical and functional, the K9000® features include high security and easy cleaning with our tilt floor system and multi-stage hair filtration.

Over the years, we have drawn on our innovative spirit to improve the K9000® and create a range of new models to choose from.

Our uncompromising focus on quality has inspired us to re-engineer some of the components and to make others from scratch to ensure we can turn out the ultimate combination of function and practical operation.

The K9000® has undergone the highest levels of electrical and plumbing tests to achieve certifications that meet local and export requirements.

The choice to buy a K9000® is one you can make with confidence.





A STAND OUT BRAND

K9000® is trademarked in several countries around the world. There are now almost 1500 units operating everywhere, from central Melbourne to Donagra in Western Australia and New Norfolk in Tasmania.

Last year alone, more than two million dogs experienced a K9000® dog wash.

Dogs and their humans are actively looking for the K9000®, with more than 300 daily searches via our online directory, findadogwash.com.

Our powerful social media presence helps to assert our brand and promote our product globally. Indeed, there is no other DIY dog wash in the world with such a strong following as the K9000®.

We invite you to join the K9000® family and, in doing so, to become a part of a strong global brand that is gathering momentum daily.

TRU-BLU
K9000®

A close-up photograph of a muddy puddle. In the top left corner, a dog's tail, likely a Border Collie, is sticking out of the water. The water is brown and murky, with some ripples and small bubbles. The background is a soft-focus view of the puddle and the surrounding ground.

WE'VE GOT YOUR BACK

The K9000® team designs, builds and sells the product. Our hearts are truly in this. But our commitment to our customers does not end at the initial purchase and delivery.

When you purchase a K9000® you can rest assured that we've got your back. From our series of instructional online videos through to a dedicated service coordinator, our after sales service is second to none.

We have built a team of our own, specially trained service technicians right across

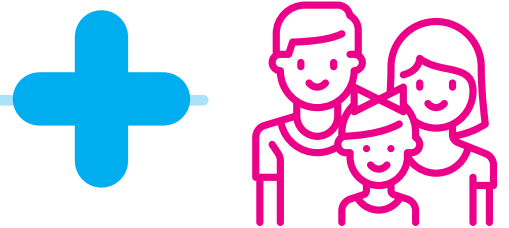
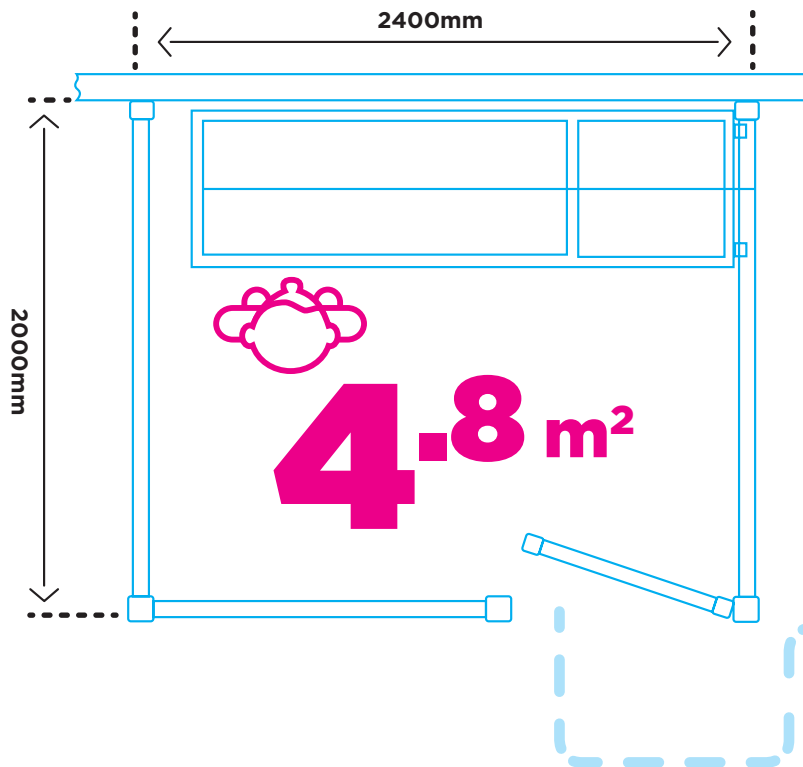
Australia. Parts are always in stock and can be shipped overnight.

Reliability is so important to us, and ensuring each and every K9000® works like a Tru Blu dream is our goal!

We also stock a range of soaps, vending products and advertising material, along with our own in-house digital printing facility to give you all the support you need to ensure your K9000® business success.

***Flash** is a 3 1/2 year old Border Collie who loves the beach, playing frisbee and going on long hikes around various trails around South Australia.*

THE POSSIBILITIES



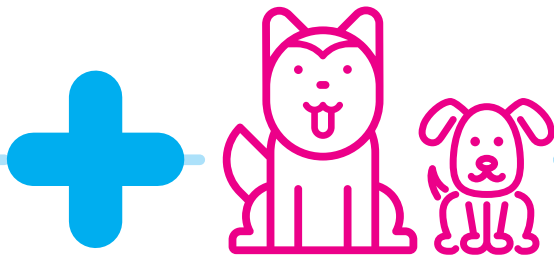
WORK HORSE 



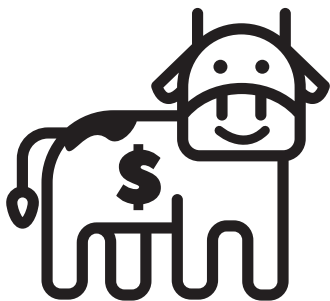
ARE ENDLESS...



**CUSTOMER
MAGNET**



SUCCESS!



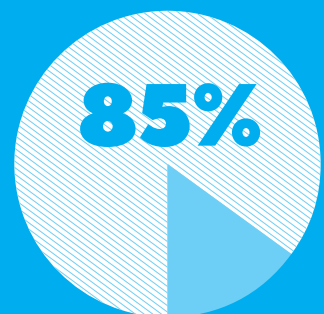
CASH COW



FOOT FALL
AT YOUR SITE



**LOW
MAINTENANCE**

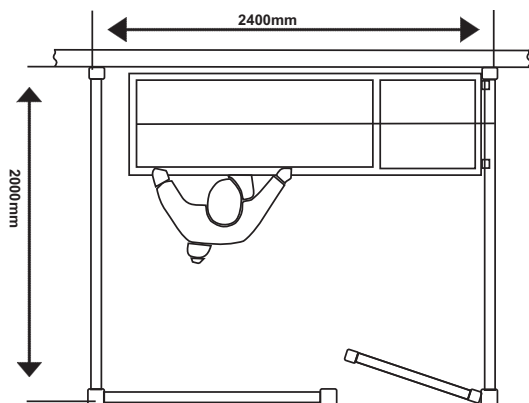


GP MARGIN

K9000®

- Ideal for outdoor/indoor application
- Great customer experience
- High grade stainless steel. Built to highest standards
- Custom All Seasons Turbo Dryer
- Bold eye catching full splash back decal
- User-friendly wash gun exclusive to K9000®
- Reliable easy to use rotary dial
- High security 3 lock system
- Technologically advanced product dispensing
- Hair free non-slip floor
- 3rd Generation advanced hair filtration system
- Credit card

TYPICAL SITE REQUIREMENTS



L x W x H = 205cm x 60cm x 185cm

TECHNICAL REQUIREMENTS

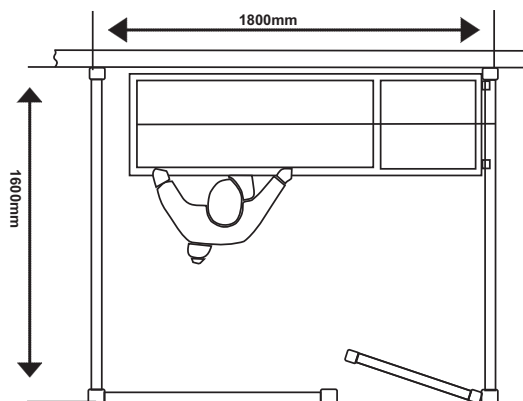
POWER (no hot water)	~220-240V	15 AMP
POWER (with hot water)	~220-240V	32 AMP
WATER	40 psi (min)	1/2" Ball Valve
WASTE	50 mm Diameter	Outlet
WEIGHT	275 Kg	

K9000® MINI

- Compact Coin Operated Dog Wash
- Great Promotional Tool
- Raised Hair Free Floor
- Wash & Dry dogs in a small foot print



TYPICAL SITE REQUIREMENTS



TECHNICAL REQUIREMENTS

POWER (no hot water)	~220-240V	10 AMP Single Plug
POWER (with hot water)	~220-240V	25 AMP
WATER	40 psi (min)	1/2" Ball Valve
WASTE	50 mm Diameter	Outlet
WEIGHT	170 Kg	

L x W x H = 160cm x 50cm x 60cm

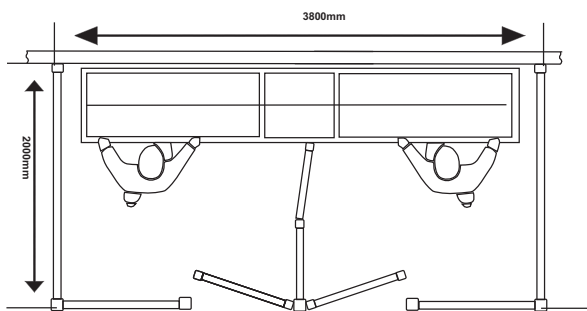
K9000® TWIN

- Based on the Proven K9000® Design and Functionality
- Wash More Dogs in a Small Foot Print
- Better ROI than 2 Units
- Maximum Visual Impact



L x W x H = 360cm x 60cm x 185cm

TYPICAL SITE REQUIREMENTS



TECHNICAL REQUIREMENTS

POWER (no hot water)	~220-240V	25 AMP
POWER (with hot water)	3 Phase	40 AMP (additional)
WATER	50 psi (min)	3/4" Diameter Fitted with Ball Valve
WASTE	50 mm Diameter Outlet	
WEIGHT	400 Kg	

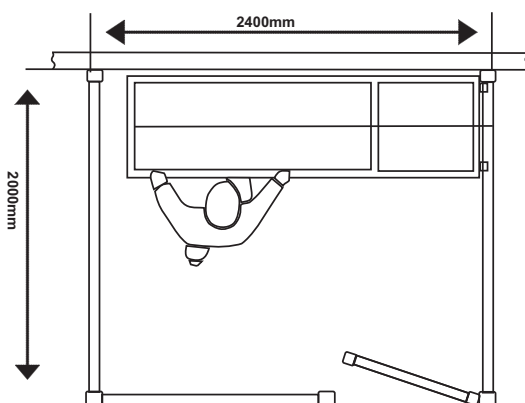
K9000® LITE

- Based on the Proven K9000® Design and Functionality
- More Cost Effective, Lighter Construction
- Ideal for Indoor Application
- The Same Great Customer Experience as the World Class K9000®



L x W x H = 200cm x 60cm x 185cm

TYPICAL SITE REQUIREMENTS



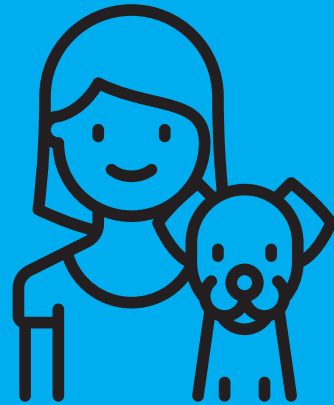
TECHNICAL REQUIREMENTS

POWER (no hot water)	~220-240V	15 AMP
POWER (with hot water)	~220-240V	32 AMP
WATER	40 psi (min)	1/2" Ball Valve
WASTE	50 mm Diameter Outlet	
WEIGHT	250 Kg	


TAKE A CLOSER LOOK

IN AUSTRALIA AS PER 2016

K9000® DOG WASH
2 MILLION
WASHES
IN 2016




4.8 MILLION
DOGS IN
AUSTRALIA



PET CARE INDUSTRY
IN AUSTRALIA
= \$8 BILLION_{pa}



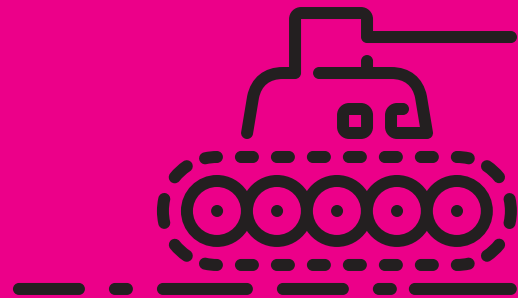
EVERY 2 IN 5
HOUSEHOLDS
OWN A DOG



20 : 100

THE WASH UP!

OF THE 1200+ K9000®s
IN OPERATION,
ZERO
HAVE EVER HAD TO BE
REPLACED

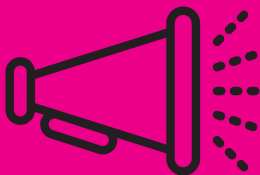


**COST
PER
WASH**

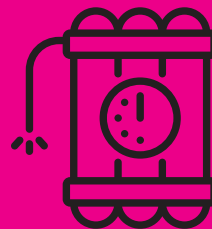


(POWER, SOAP, WATER)

LABOUR COST:
**ONE
H O U R
PER WEEK**



**POWERFUL
PROMOTIONAL
TOOL**



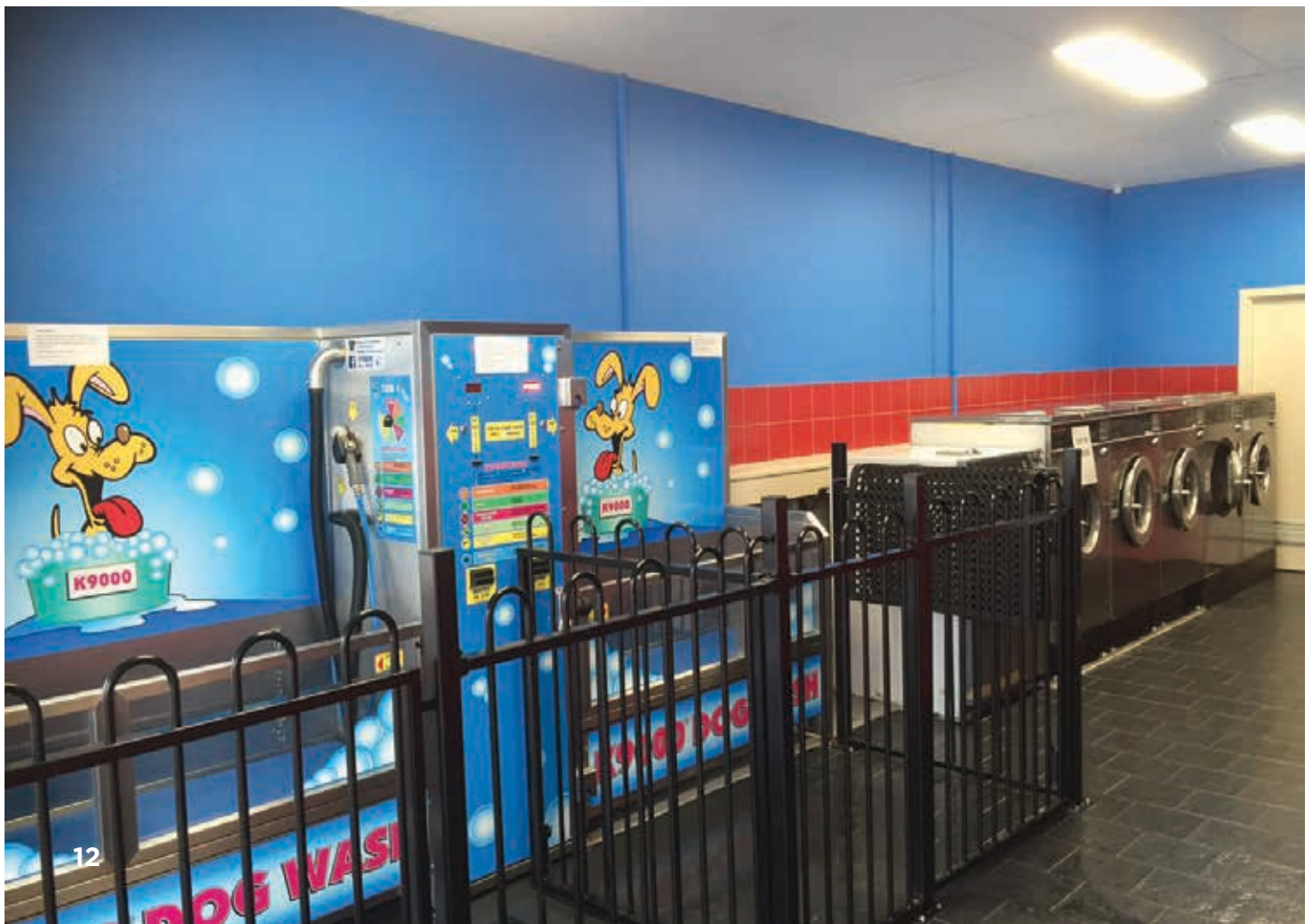
SOCIAL MEDIA
DYNAMITE!





Wet Dream Aquatics QLD ▲

▼ Wittlesea Pet Laundrette





Pet Stock Melrose Park SA ▲

▼ Shirley Vet New Zealand





“I have had 2 of the Tru Blu dog washes for nearly 9 years now. They have been an excellent investment easily paying for themselves in a relatively short period of time. The baths are accessible to our clients 24 hours a day.

Extremely well built they have been very low maintenance over the years and any issues have been quickly solved by the Tru Blu team. **Easily one of the best investments I have made over the last 20 years.”**

Dr Scott Tinson
Karingal Veterinary Hospital
328 Cranbourne Road
Frankston, Vic 3199
Australia





34 Caramut Road
Warrnambool VIC 3280
Phone +61(3) 5562 9088

info@trubludogwash.com.au
trubludogwash.com.au

